





Simple and easy appearance, in line with contemporary aesthetic concept. The product has the structure and appearance design patent. The lamp body adopts high-pressure cast aluminum and aluminum alloy, the surface is coated with outdoor used powder, double anti-corrosion to extend service life. This lawn lamp series uses LED. High efficiency constant current driver, ensure the light source is maximum used.

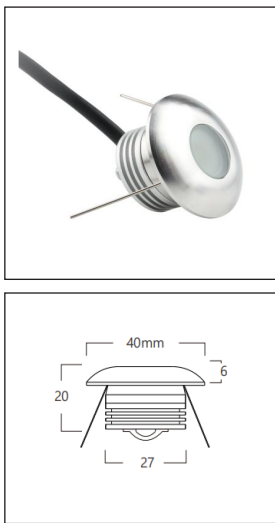
FIELDS OF APPLICATION
Outdoor Areas landscape design

IEC 62717 LED-modules for general lighting – Performance requirements
IEC 62722-2-1 Particular requirements for LED luminaires

High Lumen Efficacy 115lm/w
Body - Die cast extruded aluminum
Diffuser - Polycarbonate
Glowing Wire Test - 650°
Temperature - ta=20 °C ~ ta max=50 °C
Class - I

Optional optical diffusers -  Clear  Frosted

Model --- **1801**



A - Ø 40xH20

Default Available

00 000 00 0 00



Product Assistant Chart

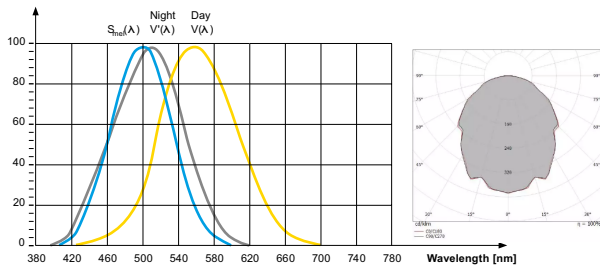
1801

Size	A				[]	
Driver	0	1	2	3	4	[]
	On/OffDali	Dimmable	Phase Dimming	1-10'		
Beam Angle (Lumen/W)	120				[]	
Kelvin	27	30	40	50	[]	
	2700K	3000K	4000K	5000K		
Finishing	SS				[]	
	Stainless Steel					
Wattage	1W				[]	

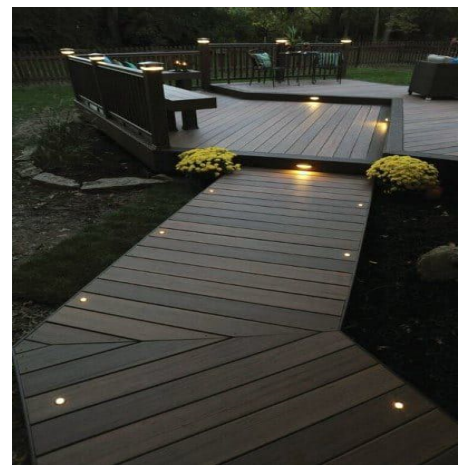
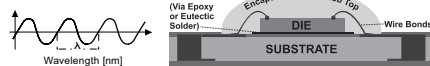
Lighting Customization Solution can offer you modifications for environment with higher options as a customized product.

IP 67 IK 08 COB McA Step 3 24V 220V

Relative spectral perception of brightness and melanopic effect
Effect as a percentage



Explanation of the three curves:
V(A) = Perception of brightness, daytime seeing with the cones
V'(A) = Night-time seeing with the rods
S_m(A) = Melatonin suppression with the photosensitive ganglion cells



LED life time		Operating time 1.000 h											
Lamp Lumen Maintenance Factor		1	10	20	30	40	50	60	70	80	90	100	
Lamp Survival Factor		1	1	1	1	1	1	1	1	0.99	0.99	0.99	
L80	50.000 h	LLMF	1	0.96	0.92	0.88	0.84	0.80	0.76	0.72	0.68	0.64	0.60
		LSF	1	1	1	1	1	1	0.99	0.99	0.99	0.99	0.98
L80	100.000 h	LLMF	1	0.98	0.96	0.94	0.92	0.90	0.88	0.86	0.84	0.82	0.80
		LSF	1	1	1	1	1	1	1	0.99	0.99	0.99	0.99



LED



series wiring



CE

